

ALLDAY
& MILLER



Hayes End Close, Hayes, UB4 8HF
£550,000

3 1 1 D



Hayes End Close, Hayes, UB4 8HF

£550,000

- Semi-Detached
- Own Driveway To Garage
- Large Kitchen/Diner
- Close To The Uxbridge Road
- Walking Distance To Shops
- Freehold
- Private Garden
- Potential To Extend STPP
- Good Schools Nearby
- Popular Location

Description

An immaculate three bedroom semi-detached home situated in a prime location is perfect for a growing family looking for a property to extend further (stpp).

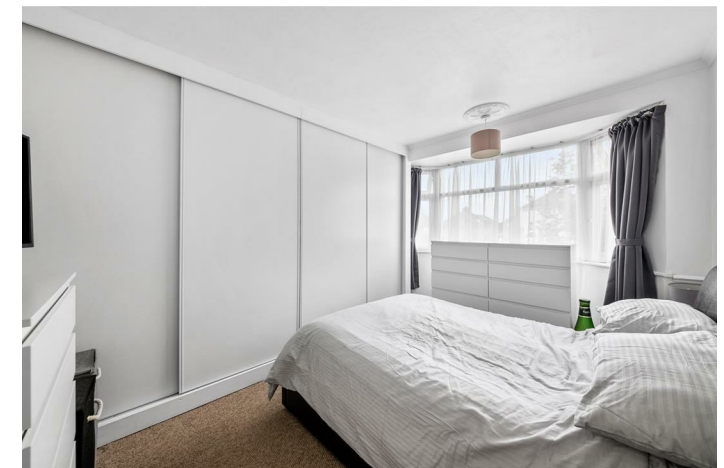
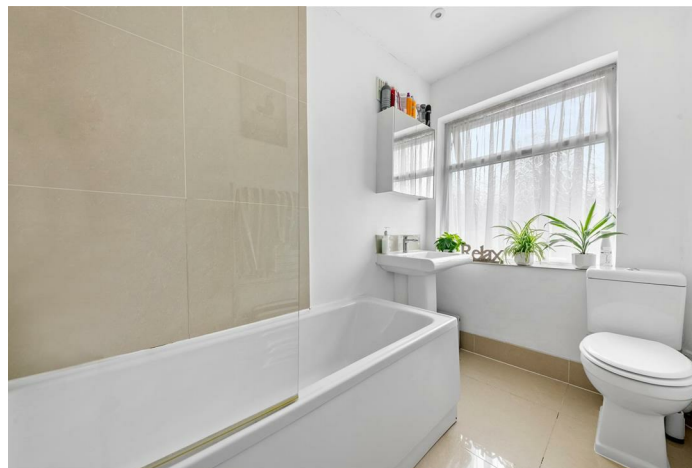
This beautiful family home brought to the market comprises of a bright and spacious reception room which leads through to a modern fitted kitchen with an island breakfast bar /dining area. The property has a half width extension which provides access to the private rear garden.

To the first floor enjoys three bedrooms (two with fitted wardrobes) and a family bathroom suite.

The front of the property with a paved driveway creating space for off road parking, also giving access to the garage . To the rear a private and secluded garden mainly laid to lawn ideal for outside dining and entertainment.

Situation

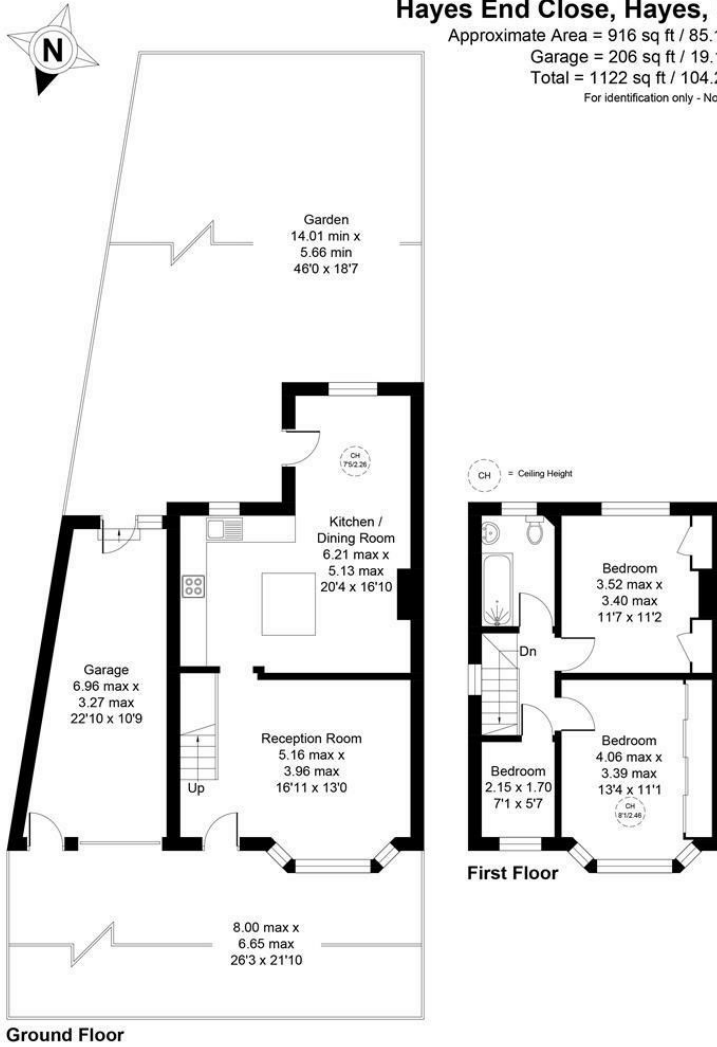
Hayes End Close is in a prime location and within easy reach of the Uxbridge Road with its variety of local amenities, cafes and coffee shops. Hayes & Harlington Train Station just a short distance away with the Elizabeth line giving easy links to Central London and the surrounding. You are a short drive to Uxbridge and Hayes/Southall locations and have easy access to the A40/A312 dual carriageways. A number of highly regarded schools in the local area including Hayes Park primary school and Oak wood secondary school.



Floor Plans

Hayes End Close, Hayes, UB4

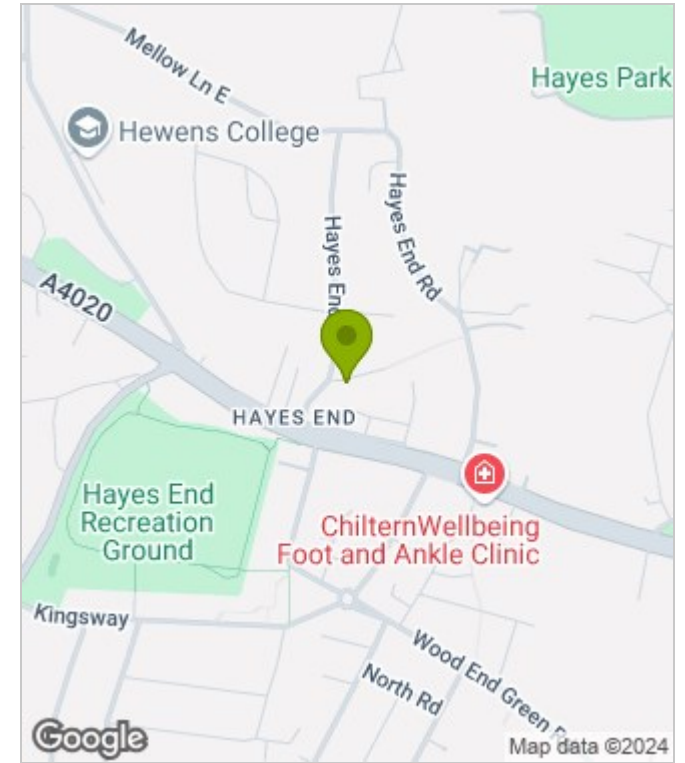
Approximate Area = 916 sq ft / 85.1 sq m
 Garage = 206 sq ft / 19.1 sq m
 Total = 1122 sq ft / 104.2 sq m
 For identification only - Not to scale



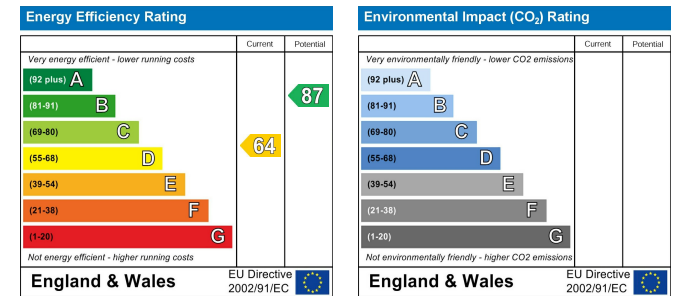
Floor plan produced in accordance with RICS Property Measurement Standards incorporating International Property Measurement Standards (IPMS2 Residential). ©Vizion Property Marketing 2024. Produced for Allday & Miller.

ALLDAY & MILLER
estate agents

Area Map



Energy Performance Graph



These particulars, whilst believed to be accurate are set out as a general outline only for guidance and do not constitute any part of an offer or contract. Intending purchasers should not rely on them as statements of representation of fact, but must satisfy themselves by inspection or otherwise as to their accuracy. No person in this firm's employment has the authority to make or give any representation or warranty in respect of the property.